

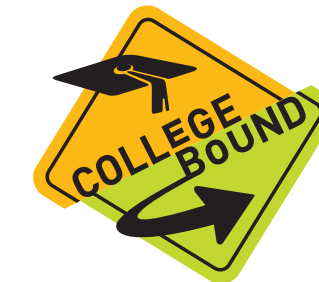
# TOGETHER WE ARE CREATING COMMUNITY:







# WELCOME MILTON:



Dear CB community,

I just left the bedside of my beloved 92-year-old grandfather. His time remaining is fleeing far too hastily, so I savor all the precious moments I am gifted with him. Before leaving my visits, I stare intently at his time-weathered face. I find my eyes following his furled brow lines, every crease telling a story. Some stories are filled with great triumph, while others teem with unspeakable pain. No matter the tenor of the tale, it's his story and gratefully, it's the foundation of mine. When I look at him, curiously, I am staring at my vibrant past, and also peering into my hope-filled future. This bifocal vision kindly escorts me through my current reality.

This duality within the narrative is what I have experienced over the last four months as Executive Director of this exceptional community. I am enraptured by anecdotes from many who call College Bound "theirs." A mere mention of CB to alumni sprouts visceral exclamations of "I LOVE College Bound," which are followed by stories of how their life trajectory was radically changed by a staff member-turned-friend. Gracious donors and doting parents have joyfully remarked on the wide-reaching impact of our organization. In their own ways, students share their budding gratitude for the comfort and support they've discovered.

While expressions of elation and appreciation abounded, I've also encountered accounts of disappointment, and even some missteps, along the way. Our work is complex, with few easy or formulaic answers. I am leaning into these stories and hold them with care. Though unintentional, these moments of imperfection are interwoven in the overall arc of our legacy and are powerful as we seek to learn, grow, and live up to our mission for generations to come.

As you read through this report, we hope you remember that YOU are part of our celebrated history and integral to our future. Behind each face is a story, and every name is intimately attached to a profound history. The numbers given are couched in a context filled with change and seasons of uncertainty. Though our stories are varied by experience and time, we are bound together under the banner of uplifting our students and families. May we continue to work together to honor the rock-solid foundation of our past, while building a brilliant, protracted future ahead.

We are immensely grateful for the gifts you have made - personally and financially - to our flourishing community.

Sincerely,

Milton Mitchell | Executive Director | College Bound





● ● ● ●  
SHANIYA

# CREATING COMMUNITY

## *With Clear* VISION ● ● ●

College Bound students will navigate barriers to higher education attainment and enter successful careers and live fulfilling lives of choice and opportunity.

## *We're on a* MISSION ● ● ●

Through an individualized, holistic, and multi-year commitment, CB empowers students from disadvantaged backgrounds to complete higher education and enter successful careers.

## *Aiming for* NORTH STAR GOALS:

65%  
WITHIN 6  
YEARS

65% of CB students in To & Through will complete higher education with a bachelor's degree within six years of high school graduation.

40%  
AT CB@  
STLCC

40% of CB@STLCC students will complete either an associate degree or other high-quality credential or certificate within four years of starting STLCC.

less  
DEBT

CB students receiving their degrees will have less debt than the national average for graduates (currently \$28,950) and will be on a path to career-relevant employment.



● ● ● ●  
KENNETH

# AT OUR CORE, WE VALUE

### FOUNDATION *of* TRUST

We strive relentlessly to be trustworthy to our colleagues, partners, families and students. At trust's root is teamwork, reliability, and integrity.

### FOCUS *on* ACHIEVEMENT

We never equivocate from fulfilling our mission: college degree attainment. We hold ourselves to clear, bold goals to ensure that we're winning the long game.

### RESPONSIBILITY *to* REFLECT

We intentionally analyze our actions, behaviors, and data in the pursuit of continual improvement. We never stop learning from research, our partners, and each other.

### SPIRIT *of* GRATITUDE

We celebrate the opportunity to work side-by-side with students, colleagues, partners, families, and donors. Each day, we find joy in our long journey.





## Creating community **WHAT WE DO**



### **TO & THROUGH PROGRAM**

Our To & Through team begins working with students the summer before 10<sup>th</sup> grade and sticks with them through college graduation.

College Preparation -- students spend 3 years of high school with our prep team:

- Developing good study habits & sharpening their academic tools
- Working with coaches to select and apply for best-fit colleges
- Attending class, 1:1 meetings, tutoring, ACT prep, college visits, and career exploration events

College Completion -- once in college, students work with members of our completion team receiving one-on-one assistance with:

- debt management
- path to degree
- career planning



### **CB ON CAMPUS**

We embrace the power of providing young adults with multiple pathways to college degrees and successful careers. Our CB on Campus programs support first-generation students at St. Louis Community College – Forest Park and Ranken Technical College.



### **OUR STUDENTS**

In 2022-23, we served 500 students. Of those, 50% come from economically disadvantaged backgrounds AND will be the first in their families to graduate from college.

## Our approach **IS HOLISTIC**

### **MENTAL HEALTH SERVICES (MHS)**

All CB students have access to mental health services. We have 2 full-time Licensed Clinical Social Workers (LCSW) on staff trained in multiple therapeutic practices.

- Along with 1:1 therapy, the team provides Social & Emotional Learning for 10<sup>th</sup> & 11<sup>th</sup> graders. Topics include: emotional regulation, tackling test anxiety, creating and maintaining healthy relationships, and setting appropriate boundaries.
- The MHS team also leads monthly trainings for CB staff, teaching skills that are most beneficial for their direct work with students. This is also a space of conversation and collaboration for the program and mental health staff.



### **STUDENT STABILIZATION SERVICES**



In the fall of 2022, in response to the increasingly complex needs of many of our students, we created a position to address basic needs, enabling students to focus on academics and their pursuit of a college degree. This includes:

- connecting students with appropriate community resources
- helping students navigate complex public systems
- providing direct financial support through our emergency student fund

**LAST YEAR, WE SUPPORTED 39 STUDENTS ADDRESSING HOUSING & FOOD INSECURITIES, TRANSPORTATION BARRIERS, AND HEALTH CHALLENGES**







Creating community **FROM THE START**

**RECRUITMENT**

We begin recruiting, interviewing, and accepting students as 9<sup>th</sup> graders and they officially join our program the summer before 10<sup>th</sup> grade.

To get ahead of potential summer melt - when students lose interest even after being accepted - our team engages incoming students through special events. These events allow them to begin building community between staff, students, and families.



THE RECRUITMENT TEAM IS ALL ABOUT *efficiency!*  
WE'RE STREAMLINING OUR APPLICATION PROCESSES  
AND COMMUNICATION WITH STUDENTS/FAMILIES



**WYKESHIA ATKINS**  
Director of Strategic Partnerships

"It takes one person to change the path of a student. One person believing in them. One person to be their guide. One person to expose them to opportunities they never thought possible. At CB, students get multiple people to assist them on their college journey.

The decision to join CB can be life-changing and I'm happy to be one of people celebrating their greatness."

**STUDENT Spotlight**

Saniyyah is taking advantage of early engagement opportunities, accepting our event invitations including bowling night, networking, and game day. Though she gets nervous in big groups, she's beginning class in the fall having already met many members of her cohort.

She wants to attend an HBCU and is looking at Spellman, TSU, and Alabama A&M. She'd like to own a business and is interested in cosmetology, fashion, design, and cooking.



**SANIYYAH** ●●●  
Hazelwood West, Class of 2026

"I would like to be the first person in my family to graduate from college and have new experiences."

●●●  
ALYSSA & KAELYN





**YEAR**  
*one*

*Building bonds* **TENTH GRADE**

**FOCUS:** In 10<sup>th</sup> grade students build relationships with their peers and CB coaches. Relationships develop through classes at CB and special events like networking, overnight camp, and the CB Summer Institute. Students learn the basics about college and career planning, develop good academic habits and study strategies, and spend time thinking about who they are and what they envision for the future.



**CAMP**

Ask any CB alum their favorite CB memory and often their answer is camp! After a two-year hiatus, the class of 2025 returned to camp in September at Camp Manitowa in Benton, IL for a weekend of team building.

Students' favorite activities were the ropes course and zipline, kayaking and canoeing, and the lip-sync/talent show! For many, camp was an entirely new experience and an opportunity to get to know each other and the CB staff.



**CB SUMMER INSTITUTE (CBSI)**

Bayer Fund College Bound Summer Institute (CBSI) was held at the University of Missouri-St. Louis. Students earned college credit while gaining experience attending class on a college campus.

Our team provided rides to and from UMSL, breakfast and lunch every day, and weekly study sessions. 100% of our sophomores who participated in CBSI passed the psychology course and earned three hours of transferable college credit.



**STAFF** *Reflection*



"I do this work because I find alignment between the values at CB and my own deeply held values of social justice and equity. It is important for me to engage in work that allows me to "live out loud" my belief that young people can contribute to the development of a more equitable and just society.

I am able to do this by supporting CB students in their endeavors to further build their educational foundation through earning a college degree."

**JENNIFER BURRIS** ●●●  
10<sup>th</sup> Grade Lead Cohort Manager





**YEAR**  
*two*

*Preparing in* **ELEVENTH GRADE**

**FOCUS:** Preparing for the ACT, drafting college lists, beginning college essays, and exploring career interests

**THE ACT MATTERS**

Even though many universities are test-optional, a higher ACT score results in more scholarships, a freshman year free of remedial classes, and provides CB insight on where students need support.

**COLLEGE LISTS**

Students begin working on college lists and many already have schools in mind. Our team works to identify “best-fit” colleges, paying particular attention to each individual student’s support system and the community available to them on campus.



*Connecting* **IN THE COMMUNITY**

**INTERSHIPS**

Students begin to explore career interests through internships, job shadowing, informational interviewing, and research.

Junior Natayvia was selected from over 75 applicants to participate in the Helen E. Nash, MD High School Internship for Excellence in Healthcare. Her favorite part was being in the OR and watching an eye surgery. She wants to be a NICU or pediatric nurse and feels this opportunity has solidified this path.

Thanks to BJC Healthcare for this amazing opportunity!



*Hitting the road:* **COLLEGE TOUR**

For the first time in over a decade, College Bound packed up for an out-of-state road trip that included:

- 18 students
- 4 staff
- 6 days
- 5 states
- 6 universities
- 1 cool keepsake t-shirt

Getting to know the surrounding community is also important in college decisions, so the group tried beignets in NOLA, visited the Mississippi Civil Rights Museum in Jackson, and explored Beale Street in Memphis, TN.





**YEAR**  
*three*

*Time to apply* **SENIOR YEAR**

**FOCUS:** Senior year is all about college applications and financial aid.

The 12<sup>th</sup> grade team guides students through the college application process by helping to narrow down college lists, editing college essays, facilitating college visits, hosting college representatives, and offering advice on finding the “best-fit” college.

To ensure students are graduating with little-to-no debt, coaches help students identify scholarship opportunities, offer assistance filling out FAFSA forms, and assist in addressing financial gaps.



*The Class of 2023*

**SUBMITTED 407 COLLEGE APPLICATIONS –  
AN AVERAGE OF 8.5 APPLICATIONS PER STUDENT**

**OF THOSE, OVER 300  
APPLICATIONS WERE  
ACCEPTED**

**AVERAGE FINANCIAL  
AID OFFERED: \$24,000**

**THE CLASS OF 2022 ACCEPTED \$475,000+  
IN FREE AID FOR THE 2022-23 SCHOOL YEAR**

**STUDENT** *Spotlight*



**OLIVIA & KARMEN** ●●●  
CB Class of 2023

Friends Olivia & Karmen graduated from Carnahan High School, earned associate degrees from St. Louis Community College through the Early College Access program, and were recipients of the new Edward Jones Scholarship facilitated by the Scholarship Foundation of St. Louis.

Karmen was accepted to DePaul University, her top college choice, and plans to study law.

Olivia will be attending University of Missouri-St. Louis to major in psychology.







Time to fly COLLEGE YEARS

**FOCUS:** In college we move to an individualized coaching model – guiding students through the transition to college, helping them find and navigate on-campus resources, and serving as a mentor and advisor.



**SENDING CARE PACKAGES**

Each semester we send our collegians care packages – reminders of the support system and community rooting for them at College Bound. This past spring we sent some very cool CB swag -- including CB water bottles!



CB STUDENTS GRADUATE COLLEGE  
*AT five times the rate* OF THEIR  
ECONOMICALLY DISADVANTAGED PEERS

AVERAGE TIME  
TO DEGREE  
COMPLETION =  
*4.6 years*

*350+*  
BACHELOR'S DEGREES  
AWARDED  
SINCE WE  
BEGAN IN 2006

*Colleges* WE ATTEND

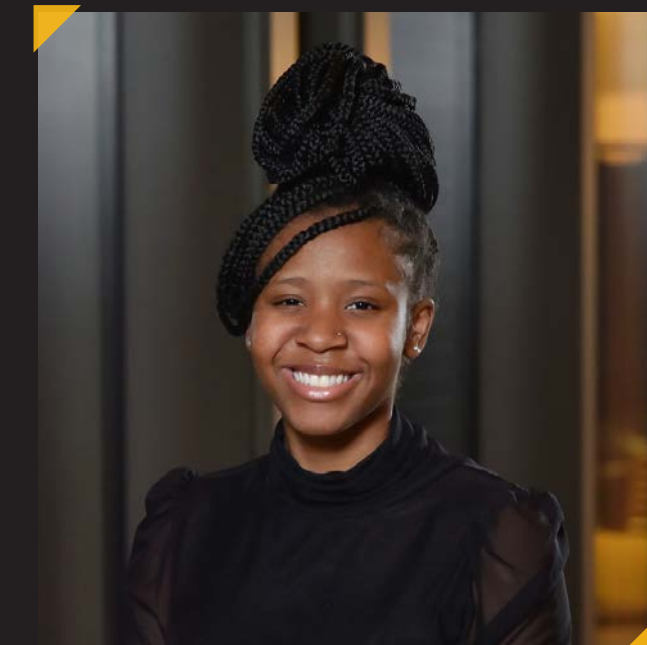
- Albion College
- Barton County Community College
- Beloit College
- Central Methodist University
- Colorado College
- Columbia College-Chicago
- Dartmouth College
- Emory University
- Fontbonne University
- Greenville University
- Hampton University
- Harris-Stowe State University
- Holmes Community College
- Hope College
- Jackson State University
- Lawrence University
- Lincoln University
- Lindenwood University
- Loyola University-Chicago
- Loyola University-New Orleans
- Maryville University
- Mineral Area College
- Missouri State University
- Missouri S & T
- Murray State University
- Olivet Nazarene University
- Philander Smith College
- Rockhurst University
- Saint Louis University
- Southeast Missouri State University
- Southern Illinois University Carbondale
- Southern Illinois University Edwardsville
- St. Louis Community College

- St. Olaf College
- Tennessee State University
- University of Arkansas at Pine Bluff
- University of Central Missouri
- University of Indianapolis
- University of Memphis
- University of Michigan
- University of Missouri-Columbia
- University of Missouri-Kansas City
- University of Missouri-St. Louis
- Washington University in St. Louis
- Webster University
- William Jewell College
- Xavier University of Louisiana
- Yale University



**COLLEGIAN** *Spotlight*

"A college degree helps me stay on a pathway to success, it gives me a motive."



**PHALEN** ●●●  
CB Class of 2022

Phalen is majoring in sales & marketing at Xavier University of Louisiana with a minor in business administration and entrepreneurship. This summer, Phalen started an internship with the Hi-Pointe Drive-in and Chicken Out restaurant chains.

One of her responsibilities is managing "dine-to-donate" fundraisers and was able to set up a fundraiser for CB. We love to see students and alumni giving back!





**ALEX ●●●**  
CB@STLCC

Initially, Alex wasn't planning on college, but he changed his mind. He's confident he made the right decision. After a rough few years personally, being able to focus on classes and a career path has meant the world to him.

"When I decided to go to college, Claire [CB@STLCC Manager] helped me with my schedule, my financial aid requirements, and my goals...I know that I can count on CB for virtually any assistance and I am extremely grateful."



*We are* **HERE FOR YOU**

**CB@STLCC: PODS**

Our team piloted new peer groups called "pods" this year. Pods met bi-weekly and focused on both academic interventions and college knowledge. The pods were such a tremendous success that other teams in our To & Through program are implementing them next year.

*In pods, we've seen increased:*  
**GPA SCORES, COLLEGE CREDIT EARNING,  
ENGAGEMENT WITH CB, AND  
UTILIZATION OF SUPPORT SERVICES**

We are proud of the community we've built at STLCC and the level of engagement with students that our team has achieved with students. The office is always bustling, whether it's time for pod meetings, check-ins with coaches, snack time, or connecting with peers in a heated game of Uno.

Throughout the school year students help plan special events. Highlights include: a Halloween costume contest, holiday crafting and ugly sweater contest, and an end-of-the-year kickball and tie-dye outing at Tower Grove Park.



**CB@RANKEN**

CB on Campus finished it's second year at Ranken Technical and is beginning on a third thanks to the continued support of Enterprise Holdings Foundation.

Our program offers:

- a supportive on-campus community
- personalized coaching
- academic skill building
- a mentorship network
- connections with on-campus resources

**OUR FIRST RANKEN GRADUATE,  
WILLIAM, COMPLETED HIS  
PLUMBING PROGRAM IN MAY.**



**TAE TAE ●●●**  
CB@RANKEN

Tae Tae is in her second year studying HVAC and Refrigeration Technology. She stays motivated by being an example for her younger siblings. Tae Tae has learned that being comfortable with asking people for help can lead to success as a student!

Tae Tae would like to own a HVAC business and currently works at a community center, sharing what she's learned about HVAC with the kids there!





Check out our **AWESOME ALUMNI**



**JARED**, CB Class of 2009  
University City High School  
University of Missouri-Columbia

**NOW: Community Solutions Account Executive, Spectrum-Charter Communications**

"My favorite memory was camp. CB's investment for that trip made me feel they cared about exposing me to how to go about building trust, fellowship, and building rapport with mentors.

CB helped build the gap between minority students and securing internships such as the internship I received with the St. Louis Blues Hockey Club. This let me know that CB cared about my professional success after college and built the foundation to where I am now professionally."



**RACHAEL**, CB Class of 2009  
University City High School  
Lindenwood University

**NOW: Recruiting Efficiency Coach, HCA Healthcare**

"The Illinois college tour was my favorite memory. As a first-generation college student, I never had this level of exposure to and would not have this opportunity if not enrolled in CB.

This trip solidified my excitement to attend college. I learned about what is most important to consider when selecting a university and what my preferences may be. I really enjoyed bonding with my classmates and CB staff/family. The level of care and support throughout the duration of the program was unmatched."



**MAKAILA**, CB Class of 2019  
Clyde C. Miller Career Academy  
Jackson State University

**NOW: Kindergarten Teacher, Lift for Life Academy**

"CB was a safe after school program with laughter, inspiration, and guidance. There were teens around you from different cultures, but also you could relate to somebody in this amazing community. I loved how the networking events built my confidence... and connection.

My favorite memory: meeting my mentors, Jane and Peter, who stuck with me through high school and college! They have had a huge impact on my life. And I can't forget about my coach, Cameron. He is one of my biggest fans who rooted for me all the way through college."



**KA-LA**, CB Class of 2015  
Lift for Life Academy  
Illinois College

**NOW: Pursuing M.Ed in Higher Education and Student Affairs, Southern Illinois University Edwardsville  
Community Director, University Housing at Southern Illinois University Edwardsville**

"I am creating community in my professional life by stepping outside of my comfort zone, and giving it my all. I serve on the boards of both Black identifying networks; The PAN African Network (ACPA) and The Black Professionals Network-(ACUHO-i).

I am proud to know others in Student Affairs and Housing, who identify similarly to how I identify. It brings me peace and joy to know I am not alone in this field."



**NICHOLAS**, CB Class of 2019  
Lift for Life Academy  
Carnegie Mellon University

**NOW: Academic Engagement, Harris-Stowe State University**

"Community is the cornerstone of my life. I learned at a young age that community is the most crucial part of what it means to be human.

In the current climate of the university at large, I have the opportunity to build student programs and initiatives that make us stronger and smarter together.

My favorite CB memory is speaking at events. It wasn't the actual speaking, it was the preparation. Through practice, learning how to orate and project my voice I enjoyed learning my OWN story."

350+ GRADUATES

2 Alumni CURRENTLY WORK AT CB: RUSSELL (CLASS OF 2011) & KELLY (CLASS OF 2009)

26 CB STUDENTS HAVE GRADUATED FROM HBCUS

Alums NA'NETTE & J.J., PARTICIPATED IN OUR NETWORKING EVENTS THIS YEAR

Business & Psychology ARE THE MOST COMMON MAJORS OF ALUMNI





Stewardship IS TOP PRIORITY

CB embraces the values of financial accountability and transparency. Our Finance Committee is led by Tim Farquhar, a partner at Rubin Brown who holds CFA and CPA certifications.



Statement of Activities January 1, 2022 - December 31, 2022

**SUPPORT AND REVENUE**

Contribution Revenue	\$1,497,131
Special Events	\$686,539
Government Funding	\$273,567
Investment Income	\$(329,596)
Other Income	\$4,202
<b>Total Support &amp; Revenue</b>	<b>\$2,131,844</b>

**FUNCTIONAL EXPENSES**

Programming	\$2,158,016
Admin	\$292,380
Fundraising	\$511,677
<b>Total Functional Expenses</b>	<b>\$2,962,073</b>
<b>Net Assets, End of year</b>	<b>\$5,825,331</b>

# CRAM SESSION! TRIVIA NIGHT

6th Annual **CRAM SESSION! TRIVIA**

On Saturday, November 12, 2022 we hosted our 6<sup>th</sup> annual Trivia Night at Whitfield School. It was another record-breaking year for our community event.

Thirty teams participated in an evening of friendly competition, games, raffles, and 100% of the funds raised went to support our hardworking CB students.

Special thanks to our returning presenting sponsor, CREATE A LOOP, and emcee Todd Kaye in his fabulous famous gold sequin jacket!

Together, we raised over \$44,000!

Bring your smart friends to this year's Cram Session! Trivia Night on Saturday, **November 4, 2023** at John Burroughs School.

Reserve your table(s) & RSVP by Friday, October 27:







## 16<sup>th</sup> Annual CAP & GOWN

The Cap & Gown gala has been a celebration of victories, of perseverance, of strength. This year it was a celebration of transitions. We introduced our new Executive Director and our speakers shared their transitions – from high school to college, from college to the workforce, and everything in between:



We heard from **DANIELLE** who has set her sights on a journalism degree from Mizzou.

We learned about **ME'KAYLA'S** path through STLCC and watched as she beamed when talking about the University of Missouri–St. Louis – her next college journey stop.

**AUSTIN** shared about his life-changing medical diagnosis and reminded us that an unforeseen obstacle doesn't have to derail plans. Since Cap & Gown, Austin has started his cybersecurity career at Stifel as an IT Associate!

We marveled at **N'KYAH'S** determination to complete her degree – with two small children through a pandemic. She shared with the room: "I think of my College Bound coaches as my angels. My experience at College Bound has inspired me to want to be the angels for someone else some day."

And we ended the evening with the indefatigable **SHANIYA** and her experience with our student stabilization services.

**SAVE the DATE: Saturday, JUNE 8, 2024!**

## TOGETHER WE RAISED \$560,000!

Special thanks to our emcee Brian Henry, co-chairs Liz & John Murphy, Board Chair Randy Grady and our sponsors.







Proud of OUR HOME TEAM

During the 2022-23 school year we welcomed the return to in-person work. While our work never stopped during the pandemic, we missed the in-person connections that facilitates and enables strong relationships at the center of our work.

Our high schoolers returned and we couldn't be happier! With increased student traffic, we committed to making a more inviting space. We created a student study space, spruced up our lobby with a comfortable waiting area, and revamped our therapy rooms.

Creating community among the team has been vital as we've worked through transition. From ice breakers at our monthly team "huddles," catching up over lunch, or discussing the latest Book Club pick, we make time to build a warm and welcoming work environment.



For three years  
OUR MONTHLY BOOK CLUB HAS  
BEEN GOING STRONG



RANDY



JOHN



DOREEN



TIM



We're grateful for the time & talent of our board members. Thank you for attending our student networking events, providing feedback to our Cap & Gown speakers, and speaking at many special CB events.

- Randy Grady**, Riezman Berger, *Board Chair*
- John Murphy**, Enterprise Holdings, Inc., *Vice Chair*
- Doreen Carmichael**, Community Volunteer, *Secretary*
- Tim Farquhar**, RubinBrown, *Treasurer*



- Jill Anderson**, Edward Jones
- Susan Buse**, Attorney
- Marilyn Dredge**, Community Volunteer, The Shepard Family Foundation
- Jerry Fox**, BJC Healthcare
- Travis Freeman**, Moneta Group
- Ron Henley**, Community Volunteer
- Dan Mandoli**, UpHealth
- Dan Miller**, CIBC
- Al Mitchell**, Bayer Fund
- Vince Reese**, Mickes O'Toole, LLC
- Dr. Gretchen Sander**, Community Volunteer/Pediatrician
- Brian Seiz**, Community Volunteer
- Patrick Smith**, Ameren
- Julie Stern**, JBS Pilates
- Kristin Thompson Poelker**, Renaissance Financial
- Stefani Wittenuer**, Bryan Cave Leighton Paisner
- Pete Zeiser**, Midwest BankCentre





We are grateful for the generosity of the CB community and thrilled to welcome 135 new donors and humbled and joyful to recognize 75+ donors who have supported CB annually for over a decade! **The following reflects gifts received Jan. 1, 2022 - Dec. 31, 2022.**

**CHAMPIONS: \$100,000+**

Anonymous  
Emerson Charitable Trust  
Enterprise Holdings Foundation ♥  
Hauck Charitable Foundation  
Missouri Community Service Commission ♥  
The Tilles Foundation ♥

**CHANCELLORS: \$50,000-\$99,999**

Anonymous Fund of YouthBridge Community Foundation  
Bayer Fund  
Berges Family Foundation  
Boeing  
Diane Briere de l'Isle & Henry Engelhardt  
via the Moondance Foundation ♥  
Lenoir Charitable Trust  
Melissa Paz ♥

**DEANS: \$25,000-\$49,999**

Ameren Corporation Charitable Trust ♥  
Cardinals Care ♥  
Cigna  
Edward Jones ♥  
GalaxE.Solutions  
Lynn & Rick Hill  
Stacey & Rich Liekweg ♥  
Liz & John Murphy  
Alvin & Ruth Siteman  
Carol Staenberg ♥  
Staenberg Family Foundation ♥  
Nicky & Scott Stern ♥  
Stifel  
St. Louis Mental Health Board  
United Way of Greater St. Louis ♥  
Laurie & Ray Van de Riet  
Linda & Pete Werner ♥  
Linda Wallace Jones & Richard Jones ♥

**PROVOSTS: \$10,000-\$24,999**

Charleys Kids Foundation  
The Cramer Institute ♥  
deVan Sealants, Inc.  
Enterprise Holdings  
Four Leaf Clover Foundation ♥  
Vicky Fraser & Steve Miller ♥  
Herman T. And Phenie R. Pott Foundation ♥  
Jennifer & Tom Hillman ♥  
Drs. Karen Joynt Maddox & Tom Maddox \*  
Hannah & Will Kendall  
Carol & Ward Klein ♥  
Ming & Dan Mandoli  
Jamie & Bryan McGowan  
Sharon & Tom McPherron  
Midwest BankCentre  
Missouri State University  
Norman J. Stupp Foundation ♥  
Lisa Orden Zarin, CB Founder & Larry Zarin ♥  
Parkview Gardens Association  
Lorenza Pasetti \*  
Reinsurance Group of America \*  
Renaissance Financial  
The Saigh Foundation  
Saint Louis University  
Gretchen Sander & Adam Birenbaum  
Shepard Family Foundation  
Sherrie & Chris Sims  
Leah Staenberg  
Julie & Tim Stern ♥  
St. Louis Community College  
St. Louis County Children's Service Fund  
St. Louis Philanthropic Organization, Inc.  
St. Louis Trust & Family Office  
Trio Foundation of St. Louis  
Jane Tschudy  
W. Grant Williams III, The Sayers Foundation ♥

\* = New donors  
♥ = Donors who have given for the past 10+ consecutive years



**VISIONARIES: \$5,000-\$9,999**

Eva & Russ Aagaard  
Albrecht Family Foundation ♥  
Anonymous  
Aon Risk Solutions  
Linda Bargmann  
Becker Iron & Metal  
BJC HealthCare ♥  
Boeing Employees Community Fund  
Julia Boyer & Brian Henry  
Susan & Paul Buse  
Rachael & Joel Brightfield  
Raulandy  
Maxine Clark & Bob Fox ♥  
Lisa & Greg Ereksen  
Laura & Tim Farquhar ♥  
First Bank  
Lana & Jerry Fox  
Gershman Foundation  
Sally & Ken Katzif ♥  
Latriece & Orvin Kimbrough  
Barbara Kohm  
KPMG  
Lewis Rice, LLC  
Mary Ranken & Ettie A. Jordan  
Charitable Foundation  
Maryville University  
Matter Family Office  
Laura & Paul Miller ♥  
Missouri Foundation for Health  
Northern Trust \*  
Kimberly & Ron Norwood  
Lucy Schreiber ♥  
Edward V. Seaberg & Charles P. Smith  
Kim & Brian Seiz ♥  
Gail & Clif Smart  
Southeast Missouri State University  
University of Central Missouri  
University of Missouri-Columbia \*  
University of Missouri-St. Louis  
Washington University in St. Louis ♥  
Washington University School of Medicine  
Teri & Paul Weber  
Alex & Joanna Wolff

**PROFESSORS: \$1,000-\$4,999**

Debbie & John Abrams ♥  
Robin & Scott Alton ♥

Jill & Matt Anderson  
Anonymous  
AT&T Missouri  
Jenny & John Beckstead \*  
Steve Bezdek  
Bryan Cave Leighton Paisner  
Buckingham Strategic Wealth ♥  
Martha Calcutt  
Doreen Carmichael  
Sally & Chuck Carpenter ♥  
Central Bank of St. Louis  
Ana Coelho & Leonard Green ♥  
Jane & Peter Conrad ♥  
Kathleen & Ken Cook ♥  
Sherry & David Cordani \*  
Lynn & Joe Cornelius  
Correct Capital Wealth Management,  
Brian Pultman ♥  
Amelia & Jeffrey Counts  
Julie Ann & Kendall Coyne  
Jennifer & Jonathan Deutsch  
Margaret Donnelly & David Riedel  
Marilyn & Rich Dredge ♥  
Jessica Dyer \*  
Sara Epstein  
Cindy & Preston Fancher  
Tami & Jim Fernandez ♥  
Laura & John Fisher \*  
Janice & Bill Forsyth  
FORVIS \*  
Marina & Travis Freeman  
Sarah Plumb & Tim Froehlich  
Maria & Michael Gerritzen \*  
Sara & Eric Gilbert  
Nancy Gilbride & Scott Froidl \*  
goINET, Inc. \*  
Rebecca & Mike Golomb \*  
Gonzalez Companies, LLC \*  
Barbara B. Goodman  
Nicole & Gabriel Gore  
Anne Grady  
Tracey & Randy Grady ♥  
Anne & Sheldon Harber ♥  
Kate & David Hatfield  
HBM Holdings  
Ryan Hoyle \*  
Anthony Irace  
Carla Jackson

Johnson & Johnson  
Sarah & Todd Kaye ♥  
Dan & Jenny Klug \*  
Karen & Mont Levy  
Ramit & Richa Luthra  
Meredith Malone & Scott Baier ♥  
Method Finance  
Heather & Matt Mikula \*  
Julie & Dan Miller  
Jessica & Andy Millner  
Marsha & Al Mitchell  
Model Technology Solutions \*  
Moneta Group \*  
Andrea & Ben Moravec  
Shelby & Ron Nicholl  
Jeanne O'Keefe & Doug Knowling  
Molly & John Ortwerth \*  
Liz & Kirby Ott  
Margaret & Jim Petersen  
Angelleen Peters-Lewis & Keith Galloway \*  
Jeff & Shelly Pittman  
Teresa & Devin Price  
Dr. Dwayne Proctor \*  
Emily & Derek Rapp  
Regional Business Council  
Thomas & Julie Renfert \*  
Karyn & David Ries \*  
Winston Rogers, III ♥  
Donna Rosen \*  
Dana & Barry Sandweiss  
Sue & Jerry Schlichter ♥  
Sara & Andrew Serkes \*  
Ann & Stewart Sheinbein  
Crystal & Patrick E. Smith Sr.  
Mary Ann & Andy Srenco  
Susan & Bill Stiritz \*  
St. Louis Service Bureau Foundation  
Stupp Bros. Bridge & Iron Co. Foundation  
Heather & Mo Sundar \*  
Sarah Terrace \*  
Jackie & William Tischler  
Norma Vavra Klein & Wallace Klein ♥  
Karen Webster & Bob Clark ♥  
Lauren Weissman Kerner & Kyle Kerner  
Wells Fargo Advisors  
Jessica Willingham & David Dankmyer  
Ericka Zoll-Phelan & Jim Phelan ♥  
Clint Zweifel & Janice Smith



**SCHOLARS: \$500-\$999**

Tosha & Trevor Anderson \*  
 Anonymous  
 Arnstein Family \*  
 Anzilotti Family Dentistry  
 Irina & Dan Becker  
 Mike Becker  
 Barb & Doron Berger  
 Pamela Hermann & Joe Betz  
 Cathy & Dave Brown  
 Lynn deLearie & Kevin Pumm ♥  
 Lizzy Dooley  
 Alla & Roman Dorfman  
 Cynthia Florin & Andrey Shaw  
 Sharon & Barry Friedman  
 Gray Picture  
 Beth Gohara & Rob Barlow  
 Kathleen & Rich Gund  
 Sophia Hayes \*  
 Alesha & Ron Henley \*  
 Mimi & Gary Hirshberg  
 Sara & Tim Hudson \*  
 Hueosity \*  
 Karen Kalish, Estelle W. & Karen S. Kalish Fund  
 of the St. Louis Community Foundation ♥  
 Kelley Karandjeff & Phillip Kilbridge \*  
 Drs. Betsy Keath & Bill Powderly  
 Jennifer & Jerred Killoren \*  
 Sue & Craig Larson  
 Jenna & Brett LeClair \*  
 Pam & Kenny Lester ♥  
 Kimberly & Patrick Morgan  
 Mimi & Jim Murphy  
 Michael & Cheryl Perlmutter  
 Kathryn Plummer \*  
 Amanda & Jason Purnell  
 Matthew & Toni Ratteree \*  
 Laura & Mark Sawyer \*  
 Pamela & Andrew Schlichter  
 Shane & Terri Shadrach \*  
 James B. Skeath  
 Laura Mizes Smith  
 Karen & Tom Stern  
 Sharon & Glen Stettin  
 Tegner M. Stokes  
 Claire Stuckel Levinson & Jeff Levinson

Irene Thalden \*  
 Alyssa & Eugene Tucker \*  
 Helen & Lewis Wall  
 Jenny Weber  
 Patty & Mark Weber \*  
 Michelle & Stephen Wexler  
 Wipfli  
 Liz & Pete Zeiser

**ADVOCATES: \$100-\$499**

Audrey Adreon  
 Suzy Agin  
 Anonymous  
 Sara & Michael Austin \*  
 Cathryn Benedict & Benjamin Ryan \*  
 Stephanie & Adam Bennett \*  
 Reva Joan Kay & Myer Berman  
 Anne & Brad Bishop  
 Jackie & Bill Blackard \*  
 Tyrone Bledsoe \*  
 Galina Bouer \*  
 Monica & Lawrence Boveri  
 Tamara & Steve Bruce \*  
 Pamela & Tom Bueltmann\*  
 Tyler Bush \*  
 Susan & Chip Casteel ♥  
 Sarah Chunn-Gaines \*  
 Dana & Mark Cooley  
 Kathy & Rod Cooper  
 Jennifer Curtis  
 Pamela & Aaron Daugherty \*  
 Ryan DeBoef & Juli Panza  
 Jennifer A. DeLaney & Christopher B. Reid  
 Justin & Danielle Diecker \*  
 Bridget & Andy Dierks  
 Theresa Eckman & Bill Laupan \*  
 Liz & Jeff Esserman\*  
 Lauren Evans \*  
 Jazmyn Ferguson \*  
 Erin & John FitzWilliam \*  
 Susan & Jim Gamble  
 Tiesha Gaten-Smith & Andrae Smith \*  
 Edes Gilbert  
 Marian Rosen & Jonathan Goldberg  
 Deena & Dr. David Goran  
 Diana Gray

Hannah Green & Jacob Simon  
 Jennifer & David "Cap" Grossman  
 Dr. Peggy Guest & Frank Hamsher  
 Karen Handelman & Marc Hirshman  
 Margaret & Jason Hassenstab  
 Jeremiah Hathorn  
 Sharon & John Headrick  
 Susan & Roy Hendin  
 Kelsey & Ryan Henneboehle  
 Jennifer Hermstra \*  
 Alexis & Neil Hershey \*  
 Max Hood \*  
 Quinn Huber  
 Lisa Huxley  
 Clara Jackson  
 Danielle Jacobs-Erwin & Bryan Erwin  
 Teresa Jacobson  
 Mary & Morris Joftus ♥  
 Anthony Johnson  
 Cindy & Tyler Johnson  
 Vanessa & Damon Jones \*  
 Shivakumar Jyothi  
 Marci & Robert Kahn \*  
 KIPP St. Louis  
 Allison Kite  
 Elizabeth & Lawrence Linkon  
 Spencer Litzau \*  
 Rosalyn & Charles Lowenhaupt  
 Erica Lozon \*  
 Amanda & Mike Lucier \*  
 Linh Mach & Sang Mai \*  
 Celeste Madden & Larry Consenstein  
 Debbie & Andy Malone  
 Thelma & Daniel Mamah  
 Linda & Virgil Mantle ♥  
 Emily & Bill Martin \*  
 Sue Matlof  
 Caline Mattar \*  
 Joelle & John McIntosh \*  
 Pam & Grant Miller \*  
 Romona & Alvin Miller \*  
 Isabella Mirgoux & Russell Brannen \*  
 Betsy Moog Brooks & Mike Brooks  
 Elyse Luecke, Moosylvania \*  
 Aaren & Earnest Muex  
 Carol Murphy \*

Peter Neidorff  
 Chonda Nwamu \*  
 Michele Paisig \*  
 Robert Patterson  
 Jean & Eric Paul \*  
 Karen Perille \*  
 Alison & Danny Plax  
 Julie Plax  
 William & Linda Port  
 Erin Prange \*  
 Emily Pulitzer  
 Judy & Paul Putzel  
 Sharon & Jeffrey Rosenblum  
 Andrea & Justin Ruth \*  
 Salesforce  
 Mike Sankey  
 Nancy & David Sauerhoff ♥  
 Chalana Scales-Ferguson  
 & Lathon Ferguson \*  
 Janice & Steve Seele  
 Jon & Chelsi Shockley \*  
 Eliza Simington \*  
 Amanda & Lawrence Shields \*  
 Sarah & Jeff Smith  
 Kristin & Lee Sobotka  
 Mary Beth & Allen Soffer  
 Ellen Soule \*  
 Alicia Spiegel\*  
 Constance Steinkamp & Matt Lambdin  
 Rabekah Stewart \*  
 Trey Stuckenschneider \*  
 Lance Taylor\*  
 Meg & Warren Terry  
 Christy & Jeffrey Thompson \*  
 Stephanie White Thorn \*  
 Melissa Torni \*  
 Katharine Warne Riggs  
 Betty & Tom Weber  
 Diane & Steve Weinstock ♥  
 Matthew Weis \*  
 Michael T. Whitley  
 Adella Jones & Reginald Williams  
 Tracy & Tommy Wright\*

**HONOR ROLL: Up to \$99**

AmazonSmile  
 Anonymous  
 Fina Azman & Tyler Merkel  
 Paul Baker  
 Lisa & Carl Barnes  
 Dan Boccabella  
 Sally Boone \*  
 Jared Brockmeyer  
 Elizabeth & Chris Cardinal  
 Vinay Chandrasekaran \*  
 Brian Chao \*  
 Deniece Chatman \*  
 Kate Chizek \*  
 Elaine Chollet & Adam Kilker  
 Jayne Cohen  
 Theodore Cosgrove \*  
 Michkeal Cross \*  
 Asya Delm  
 Gloria Feldman  
 Amanda Fleming \*  
 Shannon Grass \*  
 Anne & Rev. Allen Grothe  
 Paul Gruber \*  
 Myrna & Arnold Hershman  
 Susan Hill  
 Michelle & Jason Hoberman  
 Amanda Honigfort & Nick Potje \*  
 Caroline Keane \*  
 Ann & Ashley Loiterstein \*  
 Dan London  
 Janice & Charlie Mantle  
 Shuka Moshiri & Evan Brown  
 Samantha Moyerman & Jerrod Marten\*  
 Madeline Nelson \*  
 Betty J. Okenfuss  
 Madalyn Painter \*  
 Drs. Diliane & Mark Pelikan \*  
 Jackie Perryman  
 Jerilyn & Ryan Reed  
 Kelly & Doug Richter  
 Shannon Ross \*  
 Sarah & Chris Schmidt  
 Mary Schwaner  
 Amanda & Keith Seiz  
 Lianna & Michael Shepard

Aneenah Smith \*  
 Heidi Smith  
 Kate & Derick Stowe  
 Cara Stuckel \*  
 Nicole Sullivan-Handshy  
 Laura Terry \*  
 Shar & Harmon Wasserman  
 Ellen Weber & Carly Santaularia  
 Stephenie Williams \*  
 Ashley Wren \*

WE ARE  
 HUMBLLED  
 AND JOYFUL  
 TO RECOGNIZE  
 75+  
 DONORS  
 WHO HAVE  
 SUPPORTED  
 CB ANNUALLY  
 FOR OVER A  
 DECADE

WE ARE  
 THRILLED  
 TO WELCOME  
 135  
 NEW DONORS  
 IN 2022

*Give today*



PLEASE INFORM US  
 OF UNINTENDED MISSPELLINGS  
 OR OMISSIONS AND ACCEPT  
 OUR SINCERE APOLOGIES





LET'S CONNECT:

110 N JEFFERSON AVE., ST. LOUIS, MO 63103 | COLLEGEBOUNDSTL.ORG

● ● ●  
AMMAR