



**CB**the**CHANGE**  
2017-2018 | ANNUAL REPORT

Maggie Ariza,  
Cap & Gown student  
speaker, hugs Scott Baier,  
Executive Director



Renee Owens,  
grandmother of  
Cap & Gown Ball  
speaker Hassan  
Owens, celebrates his  
achievements.

## CB THE CHANGE



"College is not for everyone." This statement has been repeated with increasing frequency over the last few years, echoed in university admissions offices, the workforce development sector, and state government.

People cite reasons such as the rising cost of college (true), the alarming and growing national tally for college debt (very true), and the fact that only 50% of employers believe that college prepares students for the workforce.

But do you know what *should be* for everyone? Social mobility.

We live in a society where that is the promise we make: if you work hard and play by the rules, you should have the opportunity to contribute and provide for your family. What we know, for certain, is a college degree is a proven path out of poverty.

But it is also a public good. College degree holders are healthier, live longer, and are far less likely to be unemployed, incarcerated, or enrolled in expensive social programs. Since 2010, 95% of new jobs have gone to workers with at least some post-high school education, and degree holders will earn over \$1M more over their lifetimes than someone with no college.

I agree with the general sentiment that "college is not for everyone" – higher education needs to be more affordable, more relevant, and especially more equitable. The question I would ask is what would our society look like if college WAS designed for everyone?

Every additional degree is the change we need to see. Each one is the chance for deserving young people to live lives of choice and opportunity.

CB the Change is a call to action for everyone in the College Bound community: students, alumni, staff, AmeriCorps members, our partners in the community and in education – and you. Thank you for your belief in our mission and for answering the call through your support.

With gratitude,

Scott Baier | Executive Director | College Bound





# CB<sup>the</sup>CHANGE

**Change is the act or instance  
of making or becoming different.**

One by one, we set ripples in motion  
that take their own shape. We build  
momentum and push to form powerful,  
intentional currents. Over time, these  
create patterns that shift old grooves  
and unveil deep beauty within.

We exist for the metamorphosis of  
the lives of young people bravely taking  
new paths. They give meaning to the  
waves and make way for all those  
who will rise in the wake.

## TABLE OF CONTENTS

### MOVEMENT

Rooted in Love .....	5
Who We Are .....	6
What We Do .....	7
Colleges We Attend .....	9

### METAMORPHOSIS

Why We Do It .....	10
Pilot Program .....	11
AmeriCorps Service .....	13
Student Spotlights .....	14
Over The Years .....	16

### MOMENTUM

Board of Directors .....	18
Financial Accountability .....	19
Measuring Impact .....	20
Cram Session! Trivia Night .....	22
Stick With A Student .....	24
Pledge 10 For Tomorrow .....	26
Cap & Gown Ball .....	27
Generous Giving .....	29

## ROOTED IN LOVE

Dear Friends,

To start any organization is a feat. To start one that six years later earns a place in the Top-100 Nonprofits in the Country is nothing short of extraordinary. But we are even more proud of something bigger. Against the tide and ahead of its time, Lisa shifted the conversation about college from "let's help kids get in" to "let's make sure they complete." In 2006, this was virtually unheard of. Today it is the norm—regionally and nationally.

I want to share one more thing about Lisa, the founder of College Bound.

If you spent time around the office, there's a good chance you'd hear her say, "When two things you want are very far apart, reach passionately for both." This ability to embrace opposing notions is why CB achieved break-through outcomes while never missing a chance to let CB students know they were loved, capable of exceptional achievement and responsible for giving back.

I am proud that Scott and CB's extraordinary board and staff continue to sustain our boldness and safeguard the vision of leadership for which Lisa set the bar.

*Carol Staenberg*

Carol Staenberg  
Chair, Board of Directors



High school students from CB's 2<sup>nd</sup> class with fearless leader and founder, Lisa Orden Zarin, at Sherwood Forest camp in 2007.



## WHO WE ARE

**MISSION** | Through an individualized, holistic, and multi-year commitment, College Bound empowers promising students from economically disadvantaged backgrounds to achieve bachelor's degrees and fulfilling careers.

**COMMITMENT** | From day one, we do whatever it takes to propel our students forward. We provide the academic and social support to ensure graduation from high school and college—and maybe even more importantly, we are there for the everyday moments along the way.

**STUDENTS** | This school year, CB's full-service program reached 632 students, plus an additional 130 students via St. Louis Community College. Our high school students attend 44 high local schools; college students attend 70 colleges and universities nationwide. Of these students:

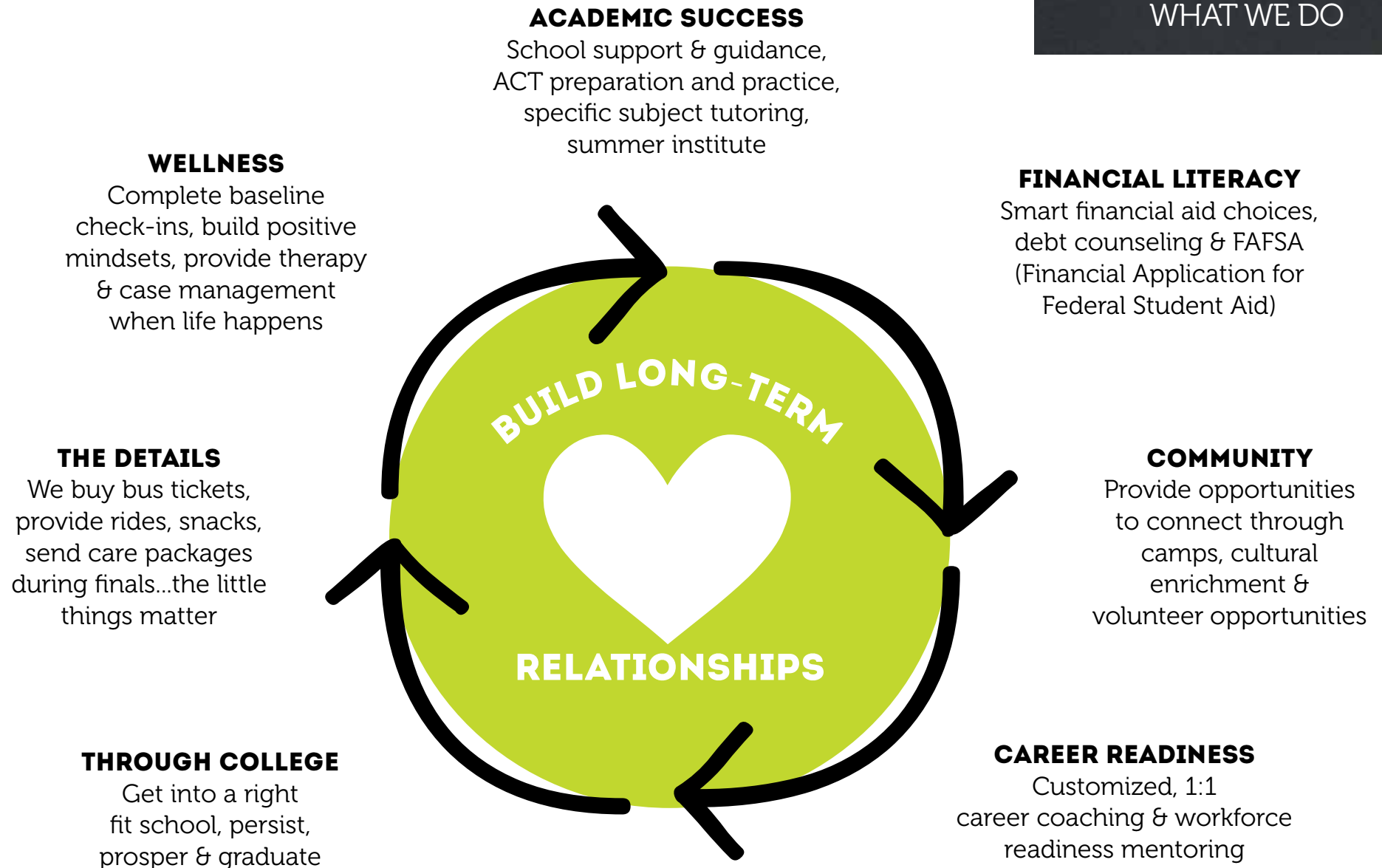
**89%**  
qualify for  
federal free &  
reduced lunch  
program

**90%**  
will be the first  
in their families  
with a college  
degree

**100%**  
are committed  
to obtaining their  
college degree  
(we measure this)

**WELLNESS** | Mental health is at the top of our list. This school year, all of high school students received a behavioral health screening.





**"TO WHOM MUCH IS GIVEN, MUCH IS REQUIRED."**



Marquise White,  
University of Missouri—  
Columbia, Class of 2018





## COLLEGES WE ATTEND

One of our most coveted privileges is to hoot and holler as CB graduates walk across the stage to receive their diploma.

Some of the colleges and universities where our cheering can be heard are:

American University  
Blackburn College  
Bradley University  
Clark Atlanta University  
Cornell College  
Dominican University  
Earlham College  
Emory University  
Fontbonne University  
Grinnell College  
Gustavus Adolphus College  
Harris-Stowe State University  
Howard University  
Illinois College  
Illinois Institute of Technology  
Kalamazoo College  
Kenyon College  
Lake Forest College  
Lawrence University  
Lehigh University  
Lincoln University  
Lindenwood University  
Maryville University  
Missouri Southern State University  
Missouri State University  
Missouri University of Science and Technology

Missouri Western State University  
Morehouse College  
Northwest Missouri State University  
Oberlin College  
Pomona College  
Princeton University  
Ranken Technical College  
Saint Louis Community College  
Saint Louis University  
Saint Olaf College  
Southeast Missouri State University  
Spelman College  
Stephens College  
Tennessee State University  
Truman State University  
University of Central Missouri  
University of Iowa  
University of Missouri - Columbia  
University of Missouri - Saint Louis  
University of Notre Dame  
Vanderbilt University  
Washington University in St. Louis  
Webster University  
Westminster College  
Xavier University, New Orleans



For many students, this is their first time away from home. We send care packages during finals from their CB family.

## WHY WE DO IT



**WE LOVE EVERY STUDENT** | A typical (amazing) CB student earns a high school GPA of 2.5 or higher, spends a month of summer in math intensive, raises their ACT score by 2 points, applies for fly-in scholarships, goes on 2 college campus visits, goes to camp for the first time, focuses on career path planning, navigates financial aid and travels to CB for class and extra tutoring.

**ON BEHALF OF** | The St. Louis Regional Chamber identified raising college completion rates as the most important lever in lifting the regional economy. But for low-income, first-generation college-goers, college can be a revolving door—few enter and even fewer graduate. College Bound students have different results. One of the key levers to breaking the cycle of generational poverty is access to family-sustaining careers, which require a college degree.

**SUCCESS** | We want our students to achieve at rates better than their high-income peers, placing them at the top of their class, nationally. To ensure we deliver, we crafted specific North Star goals:

65% CB students will earn a bachelor's degree within 5 years of high school graduation.

No CB student will have more than \$35,000 in debt when they receive their baccalaureate degree.

Within 12 months of college graduation, 75% of CB alumni will be fully embarked on meaningful careers, directly or through enrollment in postgraduate program.

**SELF-AWARENESS** | We are always learning. This past year, we made changes to our program to make it more rigorous and standardized. It is managed by full-time CB staff. In the past, AmeriCorps members played a role in the process which caused variation from year to year. We are also using a new interview tool, through which all incoming students commit to improving their GPAs and ACT scores throughout high school.









## PILOT PROGRAM LAUNCH

In 2016, College Bound discovered a piece of data that could not be ignored. St. Louis Public Schools (SLPS) high school graduates who enrolled in St. Louis Community College (STLCC) persisted to their second year at a 38.2% rate, and merely 1.6% earned an associate's degree or credential in four years.

We had to do better.

In 2017, CB began BeSTLCC, a pilot program, on the STLCC–Forest Park campus. Community College Program Manager, Mariah Opager, leads a team of three AmeriCorps Coaches to serve 132 low-income students—and growing!—at a permanent space on campus.

Over the first two semesters, coaches worked closely with students on the following:

- Building solid study habits
- Visiting campus resources for support
- Communicating with instructors
- Calculating midterm GPAs
- Completing their FAFSA



St. Louis Community College



## LEADING THROUGH SERVICE

We excitedly welcomed and trained new AmeriCorps (AC) Coaches this past August, bringing the total number of AC members who have served College Bound since 2008 to 129.

AmeriCorps is a voluntary civil service program supported by the U.S. federal government, foundations, corporations, and other donors engaging adults in public service work with a goal of "helping others and meeting critical needs in the community."

These volunteers spend a year of their lives standing with our students. Their federally funded work, made possible by the National Corporation for Community Service and the Missouri Community Service Commission, inspires many of them to a lifetime of service. Their efforts form the backbone of our work and we are grateful for their commitment.



"I have the privilege to learn how to communicate empathetically. Understanding my students is imperative to best support them."  
– Liliana | CB AmeriCorps Coach



## SPOTLIGHT: HASSAN

### HIGH SCHOOL

Clyde C. Miller Career Academy (valedictorian)

### CB CLASS OF 2014

### COLLEGE

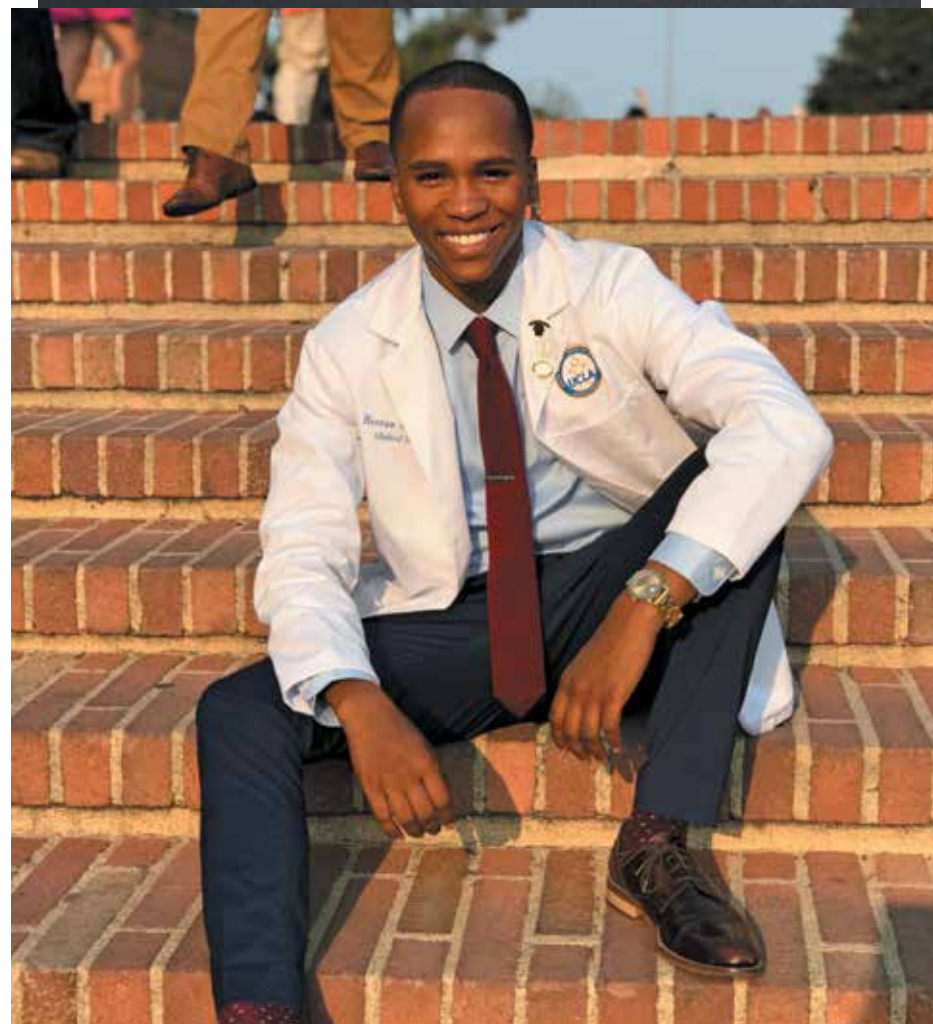
Xavier University of Louisiana, Class of 2018

### CURRENTLY ATTENDING

David Geffen School of Medicine at UCLA

### CB THE CHANGE

- Volunteer for Men on the Move
- Chemistry drill instructor
- Organic chemistry research student with BUILD (Building Infrastructure Leading to Diversity) which is a NIH (National Institute of Health) initiative
- Mr. Xavier University, of Louisiana
- Intern at the Veteran Affairs Hospital and Walgreens pharmacy
- Summer research intern UC Davis CCBGAP (Chemical and Chemistry Biology Graduate Admissions Pathway).



Hassan smiles at his White Coat Ceremony at the School of Medicine at UCLA.





Sep'Tisha committed the first two years of her career to advancing education for low-income students.

## HIGH SCHOOL

Vashon High School, first in her class

## CB CLASS OF 2014

## COLLEGE

Kalamazoo, Class of 2018

## CURRENTLY WORKING:

At Jefferson Elementary School as a preschool teacher's assistant and volunteering with the Cultural Leadership program

## CB THE CHANGE

- Honor Roll 2011-2014
- National Honor Society president
- Kalamazoo tennis captain
- Volunteer at The Little Bit Foundation and Community Footprints with Ritz-Carlton Hotel
- Mentor and participant for the Show Me Costa Rica Project Helping Youth Pursue Education (HYPE) program
- Student fellow for the Center for Civic Engagement (CCE)
- Teach For America—2018 Corps Member



# CBthe

## 2006

Breaking ranks with traditional college access models, CB plants a flag for college completion

36 students  
3 staff  
2 school districts:  
St. Louis & University City



## 2007

Commits to community service as a core value

Accepts first award for program success: "What's Right With The Region" from Focus St. Louis

Triples student enrollment



## 2008

Adds focus on career & workforce readiness

Expands program through major grant & partnership

100% of HS students graduate & matriculate to college



## 2009

Receives government funding to add services & reach more students

Introduces one of country's first college completion programs

Debbie Greenberg receives national college "Counselors That Change Lives" award



## 2010

Opens "Knowledge Center" with after-school & year-round learning for students & families

Fortifies success through on-site mental health for students & families



## 2011

Identified as "Blueprint for Success" in a white paper by the Educational Policy Institute, Washington DC

32 staff and AmeriCorps members  
39 high schools  
70 colleges



# CHANGE

## 2012

Ranked in America's Top 100 Nonprofits for "proof of results and readiness to grow"

First CB college graduations!



## 2013

Named best-performing college access organization in the country: "College Access Organization Award of Excellence"

First alumnus returns to CB as AmeriCorps coach



## 2014

Builds college enrollment software (Bridgit 2 College) & pilots with 1,500 users in 3 states

CB's collegians start graduating at the same rate as all students in Missouri.



## 2015

Evaluated by RAND scientists who publish peer-reviewed results: CB students outperform peers in English, math, science & college enrollment

Survey by USA Funds shows 92% alumni satisfaction



## 2016

Doubles weekly programming in onsite renovated classrooms with tech & family-friendly spaces

Celebrates TEN years of serving students & families!



## 2017

Pilots a college persistence program (BeSTLCC) in response to the low completion rate of St. Louis Community College students.





## OUR BOARD

**Carol Staenberg, Chair** | Community Volunteer  
**Winston Rogers, Vice-Chair** | Community Volunteer, Retired  
**Chuck Carpenter, Treasurer** | Central Bank  
**Randy Grady, Secretary** | Riezman Berger  
**Keith Brooks** | St. Louis Cardinals  
**Doreen Carmichael** | Maritz CX  
**Kendall Coyne** | Ameren  
**Marilyn Dredge** | Community Volunteer  
**Joe Goldberg** | TruFusion  
**Tim Farquhar** | RubinBrown  
**Amy Fields** | HBM Holdings  
**Marcela Hawn** | Centene Corporation  
**Kyle Hickok** | Edward Jones  
**Carla L. Jackson** | First Bank  
**Todd Kaye** | Bryan Cave  
**Sandra Young-McNamee** | BJC HealthCare  
**Dan Mandoli** | Express Scripts  
**John Murphy** | Enterprise Holdings, Inc.  
**Betsy Miller** | Commerce Bank  
**Al Mitchell** | Monsanto Fund  
**Todd Nissenholtz** | Cofman Townsley  
**Ronald Norwood** | Lewis Rice  
**Julie Stern** | Webster University  
**Anthony Tillman** | Washington University in St. Louis



College Bound Executive Committee

Pictured (top left, clockwise): Todd Kaye, Betsy Miller, Al Mitchell, Randy Grady, Ron Norwood, Carol Staenberg & Chuck Carpenter. Not pictured: Marilyn Dredge

**STATEMENT OF ACTIVITIES**

January 1, 2017 - December 31, 2017

## SUPPORT &amp; REVENUE

Contribution Revenue	\$1,165,110
Special Events	\$932,727
In-kind Contributions	\$223,061
Investment Income	\$227,950
Other	\$ 18,415
Total Support & Revenue	<u>\$2,567,263</u>

## FUNCTIONAL EXPENSES

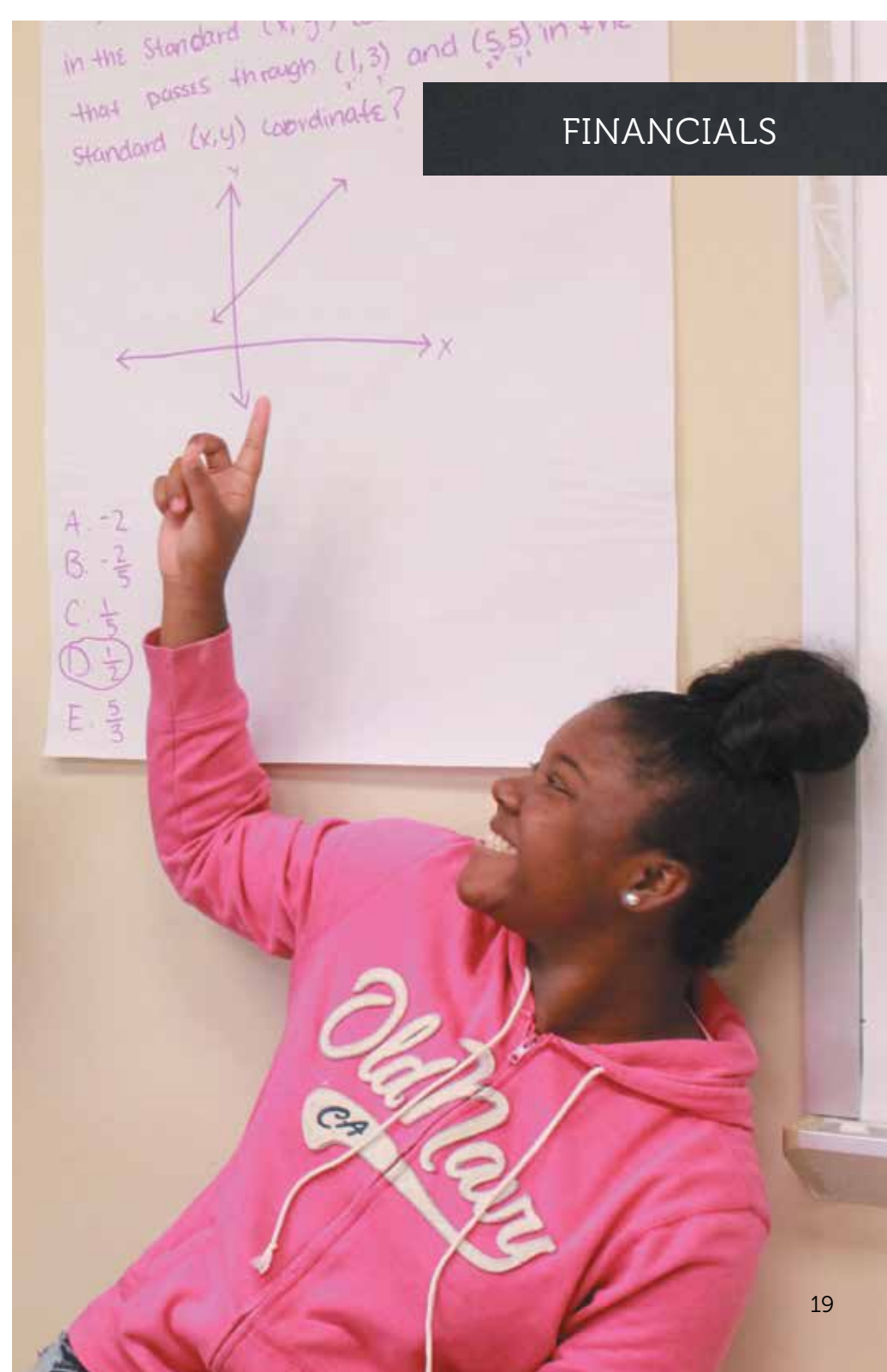
Program	\$2,028,274
General & Administrative	\$318,696
Fundraising	\$337,271

Total Functional Expenses	<u>\$2,684,241</u>
---------------------------	--------------------

Change in Net Assets	(116,978)
----------------------	-----------

Net Assets, beginning of year	\$3,967,158
-------------------------------	-------------

Net Assets, end of year	\$3,850,180
-------------------------	-------------



### HIGH SCHOOL GRADUATION

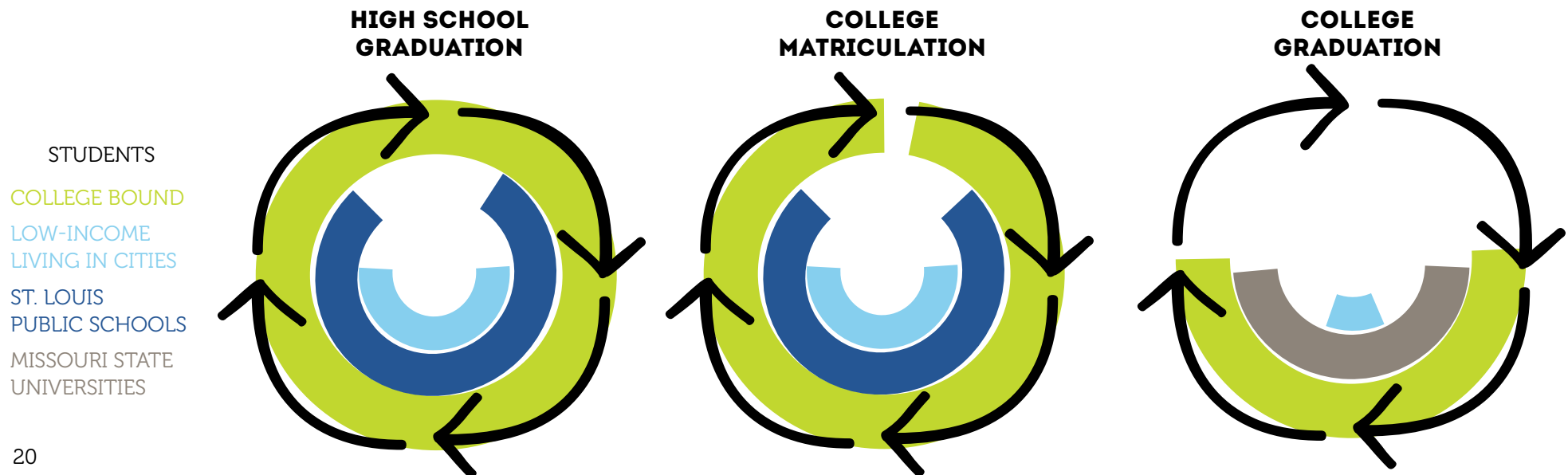
CB students have their sights fixed on attending and graduating college. Our students earn AP class credit, take college courses while in high school, and challenge themselves academically. High school graduation is the first milestone on their path towards college graduation; this focus results in 100% of CB students are graduating from high school.

### COLLEGE MATRICULATION

First-generation students (neither parent completes any college degree) face enormous challenges to entering college. Only 25% matriculate to a four year college. They are also more likely to enroll in a for profit school than their peers. Nearly 1 in 5 will make that choice. In comparison 93% of CB students matriculate to a four-year college and not once has a College Bound student chosen to attend a for profit school.

### COLLEGE GRADUATION

To be low-income and first-generation is to face an enormous barrier towards college completion; only 11% of these students complete college after 6 years. CB is proud that we have quadrupled this number to 49% and will strive to raise it even higher.





## TRIVIA NIGHT



We are grateful to our generous sponsor, Centene Charitable Foundation, for presenting our second annual Cram Session! Trivia Night to over 320 spirited collegial competitors. The gym was filled with homemade brain food and good times.

Whitfield School was our welcoming host, and their very own team won the curve-setting prize – a bunch of College Bound swag and of course, coveted bragging rights!

Thanks to all of our fierce competitors we raised \$40,793 to support our hardworking CB students.

Next year we'll have another brilliant night of college-level quizzes and camaraderie. Join us for more study skills and mind-blowing questions as we celebrate our students, families and friends of CB!

**CENTENE**  
Charitable Foundation

## STICK WITH A STUDENT



Jordan Young  
Metro High School senior

**STICKING TOGETHER** | Our most loyal supporters established the Stick with a Student community in 2014. "Sticker" donors make a three-year pledge and are paired with a CB student. Stickers and students get to know each other through updates, lunch dates and special events.

We are grateful to the dedication and mentorship of our current Stickers:

Alison Allman & Bob McCoolle

Anonymous

Mike & Kelly Becker

Sally & Chuck Carpenter

Jane & Peter Conrad

Julie Ann & Kendall Coyne

Jonathan & Jennifer Deutsch

Laura & Timothy Farquhar

Alison & John Ferring

Abby & Joe Goldberg

Dorette & Ed Goldberg

Barbara B. Goodman

Randy Grady

Carla & Gary Grewe

Kate & David Hatfield

Pam & Kyle Hickok

Peggy & Lee Kaplan

Sally & Ken Katzif

Lauren Weissman Kerner & Kyle Kerner

Carol & Ward Klein

Diane Levine & Jimmy Jenkins

Stacey & Rich Liekweg

Ann & Randy Lipton

Liz & John Murphy

Anne Nativi-Walton & Troy Walton

Kimberly & Ron Norwood

Joyce & David Price

Winston Rogers

Gretchen Sander & Adam Birenbaum

Mary & Steve Schoolman

Lucy Schreiber

Carol & Michael Staenberg

Julie & Tim Stern

Nicky & Scott Stern

Mary & Tom Stillman

Susan & Howard Weissman

Sandra Young-McNamee

& Pat McNamee





# TOUCHDOWN!

## PLEDGE 10 FOR TOMORROW

CB was honored to be selected as one of only four non-profits nationwide to be highlighted by Chris Long's "Pledge 10 for Tomorrow" campaign—in which the former Rams' Defensive End donated his entire 2017 season salary to organizations that promote educational equity. The four organizations were based in the three communities in which Long has played during his NFL career: St. Louis, Boston, and Philadelphia.

Long challenged each community by pledging to give an extra \$50K to the city with most individual contributions, and because of you, St. Louis was the big winner. We were humbled to accept and split this additional gift with The Little Bit Foundation. All in all, Chris Long's generous campaign raised **\$142,617** for College Bound.

And there's more! The #Pledge10 movement kept going after the campaign ended, as you may have seen through our social media. The momentum garnered enough national attention to solicit a matching donation from Ellen DeGeneres and in-kind donation from Chegg Books to provide pricey textbooks to CB students for free!



"Educational opportunity and equity are the best gateway to a better tomorrow for everyone in America."



In March of 2018 (about a month after his Super Bowl win), Chris Long stopped by College Bound to meet and mingle with staff and students in our office, proving his heartfelt commitment to #CBtheChange.



# COME TOGETHER *at* CAP & GOWN



On Saturday, June 9<sup>th</sup> at the Four Seasons Hotel St. Louis, 550 guests joined co-chairs **Robin and Tim Wentworth** and **Kerrin and David Kowach** at Cap & Gown Ball.

Guests mingled with students and had the privilege of hearing several CB students speak about their personal struggles and triumphs through high school and college.

Tiana spoke about her dreams and how CB's wellness program provided her with tools for coping with life's challenges. Maggie shared examples of the struggles immigrants face in today's social climate and the strength of discovering her love for community service. Finally, Hassan spoke about the power of persistence in the face of adversity that has led him to a full ride scholarship to the David Geffen School of Medicine at UCLA.

**Express Scripts & Wells Fargo Advisors** served as co-presenting sponsors, and **John Davis**, Managing Partner at the Cramer Institute and longtime supporter of College Bound, took the reins as emcee.

**Together, we raised a record \$1,007,164!**







SAVE THE DATE | SATURDAY, MAY 18, 2019  
@ THE FOUR SEASONS HOTEL ST. LOUIS

## GENEROUS GIVING



We are humbled to all of our family and friends who ignite movement, momentum and metamorphosis by their generosity. The following reflects gifts received between January 1, 2017 - Decemeber 31, 2017:

### **LIFE CHANGERS | \$200,000 - \$500,000 (2-5 years)**

Anonymous (2)  
The Ferring Family Foundation  
Carol & Michael Staenberg &  
The Staenberg Family Foundation

### **ANGELS | \$250,000 - \$499,000**

Missouri State Service Commission

### **GUARDIANS | \$100,000 - \$249,999**

Anonymous  
The Chris Long Foundation  
Express Scripts Foundation  
Carol & Michael Staenberg &  
The Staenberg Family Foundation

### **HISTORY MAKERS | \$50,000 - \$99,999**

Anonymous  
Emerson Charitable Trust  
The Ferring Family Foundation  
Lenoir Charitable Trust  
Monsanto Fund  
The Staenberg Family Foundation  
Carol & Michael Staenberg  
State AmeriCorps (2017-18)  
United Way of Greater St. Louis

### **FOUNDERS | \$25,000 - \$49,999**

Anonymous  
Cardinals Care  
Centene Charitable Foundation  
Citi  
Jennifer & Tom Hillman  
Sally & Ken Katzif  
Maritz  
Diane Briere de l'Isle & Henry Engelhardt via the  
Moondance Foundation

Nicky & Scott Stern  
The Tilles Foundation  
Robin & Tim Wentworth

### **PIONEERS | \$10,000 - \$24,999**

Albrecht Family Foundation  
Anonymous  
Bank of America Charitable Foundation  
BJC HealthCare  
Velma Boyer  
Katherine & Andy Byer  
Marilyn & Rich Dredge  
Edward Jones  
Four Leaf Clover Foundation  
Maxine Clark & Bob Fox  
Victoria Fraser & Steve Miller  
Randy Grady  
Kate & David Hatfield  
Peggy & Lee Kaplan  
Stacey & Rich Liekweg  
Elaine & Arthur Margulis  
Sharon & Tom McPherron  
Liz & John Murphy  
Norman J. Stupp Foundation  
Parkview Gardens Association  
Herman T. & Phenie R. Pott Foundation  
Shepard Family Foundation  
Julie & Tim Stern  
Stifel Financial  
Wells Fargo Advisors  
Linda & Pete Werner  
W. Grant Williams III  
& The Sayers Foundation  
Sandra Young McNamee  
& Pat McNamee  
Lisa Orden Zarin & Larry Zarin

## VISIONARIES | \$5,000 - \$9,999

Debbie & John Abrams  
Ameren Charitable Trust  
Anonymous  
Marilyn & John Beatty  
Becker Iron & Metal  
Boeing Employees Community Fund  
Julia Boyer & Brian Henry  
Jennifer & Jonathan Campbell  
Dentons  
Enterprise Holdings Foundation  
Laura & Timothy Farquhar  
Dorette & Ed Goldberg  
Carla & Gary Grewe  
Anne & Sheldon Harber  
Marcela & Louis Hawn  
HBM Holdings  
Koman Group  
Lewis Rice  
LHM  
Kathy & Rick Lintz  
Susan & Steve Lipstein  
Kathy Marshak  
Maryville University  
Midland States Bank  
Julie & Dan Miller  
Laura & Paul Miller  
Millstone Foundation  
Missouri State University  
Joyce & David Price  
Penny & David Queller  
Susan & Jerry Schlichter  
Lucy Schreiber  
Sherrie & Chris Sims  
Southeast Missouri State University  
St. Louis Regional Business Council  
The Cramer Institute  
Barrett Toan & Polly O'Brien  
University of Central Missouri  
Sara & Mike Wade  
Washington University in St. Louis  
Washington University School of Medicine

## MENTORS | \$1,000 - \$4,999

Alison Allman & Bob McCoole  
Robin & Scott Alton  
Katie Alvarez  
Anheuser-Busch  
Anonymous  
Keri & Dennis Barton  
Cynthia & Michael Behr  
Anne & Steve Bezdek  
Toni & Mark Bini  
Anne & Brad Bishop  
Lee Bohm  
Boyce Family Foundation  
Rachael & Joel Brightfield  
BSI Constructors  
Buckingham Asset Management  
Emily Burch & Chris Zimmerman  
Sally & Chuck Carpenter  
Carrollton Bank  
Bryan Cave  
Ana Coelho & Len Green  
Michelle & Jeff Cohen  
Jane & Peter Conrad  
Kathleen & Ken Cook  
Paula & Patrick Coughlin  
Julie Ann & Kendall Coyne  
Aubrey & Matt Crane  
David Dankmyer  
Lee & Mike DeCola  
Jennifer DeLaney & Christopher Reid  
Lynn deLearie & Kevin Pumm  
Jonathan & Jennifer Deutsch  
Dennis Disch  
Enterprise Holdings  
Sara Epstein  
Lisa & Greg Erikson  
Suzanne Epstein-Lang & David Lang  
Becky & Mack Farquhar  
Tami & Jim Fernandez  
Alison & John Ferring  
Amy & Nathan Fields

Janice & Bill Forsyth  
Fox Family Foundation  
Marilyn & Sam Fox  
Steve & Nancy Fox  
Anna Garcia  
Barbara B. Goodman  
Nicole & Gabriel Gore  
Miggie Greenberg & Andrew Rehfeld  
Molly & Zach Han  
Anne & Sheldon Harber  
Hastings & Chivetta  
Sharon & John Headrick  
Nancy & Jacques Herzog  
Pam & Kyle Hickok  
Chris & Kristen Hite  
Karleen & Tom Hoerr  
Kellie Hynes & Bob Guller  
Mary Ann & Ed Ignaczak  
Carla Jackson  
Chris Jacobs & Hank Webber  
Amy & Everett Johnson  
Jordan Charitable Foundation  
Karen Kalish  
David & Erin Karandish  
Judy & Daniel Katsin  
Samuel Katsin  
Sarah & Todd Kaye  
Elizabeth & Tim Kertz  
Carolyn Kindle Betz & Ryan Betz  
KIPP St. Louis  
Carol & Ward Klein  
Norma Vavra Klein & Wallace Klein  
Barbara Kohm  
Helen Kornblum  
Kerrin & David Kowach  
Kwame Building Group  
Ladue News  
Amy & Erik Lescher  
Pam & Kenny Lester  
Diane Levine & Jimmy Jenkins  
Karen & Mont Levy  
Ann & Randy Lipton

Meredith Malone & Scott Baier  
Matter Family Office  
Mary McKay & Jan Browne  
Judy & Bill McLaughlin  
Clara McLeod  
Leah Merrifield & Lloyd Winston  
Midwest Regional Bank  
Jessica & Andrew Millner via the  
Brod Foundation  
Marsha & Al Mitchell  
Gwen & Steven Mizell  
Leslie & Chris Moore  
Multiply  
Mimi & Jim Murphy  
Carol & Paul Nativi  
Anne Nativi-Walton & Troy Walton  
Melissa & Todd Nissenholtz  
Kimberly & Ron Norwood  
Gale & Greg Patterson  
Tara Payne & Philip Payne  
Linda Peterson & Clark McKenzie  
Susie & Gordon Philpott  
Anna & David Poger  
Teresa & Devin Price  
Private Bank  
Brian Pultman  
Winston Rogers  
RubinBrown LLP  
Claudia & Cal Ryan-Mosley  
Harold Salverda  
Gretchen Sander & Adam Birenbaum  
Mary & Steve Schoolman  
Erin & Steve Schuver  
Kim & Brian Seiz  
Janice & Clay Semenkovich  
Leslie & Greg Shiveley  
Christine Shore Fitzgerald  
& Sean Fitzgerald  
Alison Snyder-Warwick  
& Chris Warwick  
St. Louis Regional Chamber



## **MENTORS | \$1,000 - \$4,999**

St. Louis Service Bureau Foundation  
Karen & Tom Stern  
Mary & Tom Stillman  
Heather & Bradley Strahorn  
Suburban Journals Old Newsboys  
Kim & Sonny Ta  
Warren & Meg Terry  
The Barton Law Group  
Kerith & Frank Thurman  
Fran & Bob Vorlop  
Susan & Henry Warshaw  
Diane & Steve Weinstock  
Lauren Weissman Kerner & Kyle Kerner  
Susan & Howard Weissman  
Wells Fargo Legal Department  
Pat Whitaker & Dick Miles  
Amy Williams  
Risa Zwerling Wrighton &  
Mark Wrighton  
Terry & Chris Zerr

## **\$500 - \$999 | INFLUENCERS**

Ola Ajia  
Jacqueline Becker  
Kathy & Bob Becker  
Kelly & Mike Becker  
Tracy & Greg Berg  
Lise & Lee Bernstein  
Nanci & Jim Bobrow  
Busey Bank  
Margaret & Brendan Carmichael  
Kate & Michael Chill  
Carol & Ed Cohen  
Aaron Cole  
Donald Currie  
Nanci & Marty Daesch  
Laura & Bobby Deutsch  
Jennifer & David Cole Durrill  
Equifax  
Kimberly & Paul Erskine  
Thea Ervin

Amy & Kevin Fischer  
Caryl Flannery  
Courtney & Ryan Gable  
The Gershman Foundation  
Sue & Steve Givens  
Debbie & John Greenberg  
Jen & Cap Grossman  
Kate Harris & James Craven  
Anne & Rob Hill  
Lindsay & Matthew Hogan  
Andrew Hoyne  
Elizabeth Huxley  
Nancy Kalishman  
Elma & Howard Kanefield  
Ashley & John Kemper  
Micki Klearman & Joe Iacocca  
Nancy & Ted Koplar  
Chris Koster  
Nancy & Ken Kranzberg  
David Luckes & Karl Stroud  
Nicole Mahan  
Themla & Daniel Mamah  
Linda & Virgil Mantle  
Laura & John Meyer  
Betsy & Bob Miller  
Stacey & Stuart Morse  
Riffi O'Brien & Rick Seiter  
Jeanne O'Keefe & Doug Knowling  
Jovita & Patrick Oruwari  
Liz & Kirby Ott  
Christine & Richard Pennell  
Liz & Dave Powitzky  
Joe & Julie Reagan  
Marian Rosen & Jonathan Goldberg  
Laura & Scott Sakiyama  
Gail & Clifton Smart  
Stern Brothers & Co.  
Deborah & Greg Stine  
Teg & Francis Stokes  
Lisa & Brent Suffian  
Dani & Marc Wallach  
Jenny Weber & Doug Shook

Teri & Paul Weber  
Liza & David Weiss  
Keith Williamson  
Ericka Zoll-Phelan & Jim Phelan

## **INFLUENCERS | \$100 - \$499**

AbbVie Inc.  
Cheryl Adelstein & Dan Davison  
Sally Altman & Dick Weiss  
Kris & Chuck Ambrose  
Laurie & Craig Anzilotti  
Mary April  
Joy & Fred Balis  
Bank of America Employee  
Giving Campaign  
Rawel Bautista  
Susan Bloch  
Angela & Keith Brooks  
Betsy & Michael Brooks  
David & Cathy Brown  
Kevin Brown  
Kelly & Thierry Brunel  
Jacob Bugger  
Lisa Cakmak  
Martha Calcutt  
Diana Carlin  
Doreen Carmichael  
Kate & Martin Casas  
Susan & Chip Casteel  
Jean Cavender  
Carrie & Kyle Chapman  
Barbara & Harvey Citerman  
Alex Clark  
Marla & Ed Cohen  
Kathy & Rod Cooper  
Leslie & Anthony Corey  
Jennifer Curtis  
Daniel Dalton  
Kelley & Matthew Danis  
Bijal & David Desai-Ramirez  
Judy & Richard Dubin  
Jean Emling

Jennifer & Tom Etling  
Kate Ewing  
Katherine Feise  
Gloria Feldman  
Terri & Jeffrey Fine  
Peggy FitzGibbon  
Ellen Franzel  
Chuck Frederick  
Elizabeth & Kelly Garrett  
Edes Gilbert  
Dawn Gilbertson  
Go! St. Louis  
Lanie & Milton Goldenberg  
Jeremy Goldmeier  
Erika Gonzalez & Grant Kling  
Diana Gray  
Hannah Green  
Sheila Greenbaum  
& Gary Wasserman  
Lisa Greening & Sam Blumoff  
Jackie Hamilton  
Erin Harrington  
Sarah Hemenway  
Rachel & Jake Hirshberg  
Lisa & Ben Humphreys  
Nathan Iffrig  
Kirsten Jacobsen  
Jacobson Staffing  
Mary & Morris Jofus  
Andwele & April Jolly  
Diane & John Kalishman  
Laura Katzif  
Jackie & Ken Kleban  
Alli & Brett Kleitz  
Elizabeth Laakko  
Vicki Lander & Jack Oglander  
Vi-Nhuan Le  
Helen Lee & Peter Tao  
Marie & Ron Levy  
Lift for Life Academy  
Liz & Larry Linkon  
Roselyn & Charles Lowenhaupt

Liz & Larry Linkon  
Rosalyn & Charles Lowenhaupt  
Tracey Lucks  
Deborah & Andrew Malone  
Ming & Dan Mandoli  
Sue Matlof & Michael Cohen  
Cauterra Matthews  
Susan Meltz  
Jacob Mirowitz  
Amy & John Mistler  
Arlene Moore & Will Ross  
Chris Myers  
Lainie Neiman & Richard Goldberg  
Ashley & Dustin Odham  
Chelsea Osterby & Matt Nelson  
Alison Oswald & Daniel Plax  
Cheryl & Michael Perlmutter  
Amanda Peters  
Julie & Steven Plax  
Christy & Erik Polk  
Jill & Matthew Powell  
Francine & Wes Pratt  
Judy & Paul Putzel  
Renee Racette  
Nicole & Joshua Randall  
James Rath  
RBC Capital Markets  
Jerilyn & Ryan Reed  
Laura & Frank Robbins  
Lee Rosenberg  
Sharon & Jeffrey Rosenblum  
Terry & Neal Ross  
Mary Ryan-Fenske  
Tate Ryan-Mosley  
Betsy Schmidt  
Francine & Joel Schraier  
Dale & Robert Schreiber  
Ann Seeney  
Amy & Bruce Shumate  
Suzanne Siteman  
Helene & Stuart Slavin  
Michele Smith

Janice Smith & Clint Zweifel  
Judy Smith  
Samantha Smith  
Kristina & Lee Sobotka  
Mary Beth & Allen Soffer  
Malette & Rick Stevens  
Njara Stout & Buzz Spector  
Jane & David Sweeney  
Melanie Tamsky  
Fineza Tangua  
Rachel & Patrick Thimangu  
Amie & Timothy Trebing  
Nila Tuckson  
U.S. Bank Foundation  
United Way of Greater Atlanta  
Anne & Eric Van Rens  
Betty & Tom Weber  
Diane & Jim Weber  
Weber's Front Row  
Karen Webster & Bob Clark  
Webster University  
Fran Weintraub & Ed Koslin  
Gail & Randy Weller  
John Wendel  
Lori White & Tony Tillman  
Kendall Williamson  
Joanna & Alex Wolff  
Jackie & Daniel Wright  
Lynn & Wayne Yokoyama  
Arlene Zarembka  
& Zuleyma Tang-Martinez  
Adam Zucker

### **INFLUENCERS | \$1 - \$99**

Darien & Stephen Arnstein  
Derek Barisas  
Lisa & Carl Barnes  
Ellen & Morris Berger  
Justin Brenner  
Michael Buhse  
Emily Coleman  
Lisa Combs & Tim Dolan

Shannon Drohan  
Loriani Santos Eckerle  
& Matthew Eckerle  
Julie & Joe Eschbacher  
Givable St. Louis  
Sherri & Rick Goldman  
Dominique Gougis  
Anne & Allen Grothe  
Emily Ann Hagy  
Debbie & Rick Halpern  
Maureen Hanlon  
Kelsey & Ryan Henneboehle  
Myrna & Arnold Hershman  
Scott Hinkle  
Anna Isis-Brown  
Emily Jernigan  
Raizell Kalishman  
Kathleen Karpus  
Carl Koberle  
Jeanne & Hank Krey  
Stephanie Kurtzman & David Levy  
Kimmi Levinson  
Zachary Lucas  
Katie & Ben Manga  
Kelly Marti  
Sheila McCarthy  
David & Carolyn Morris  
Bridget O'Leary & Jeremy Wolf  
Kimberly Opager  
Eleanor Pardini  
Lisa Weingarth Picker & Matt Picker  
Alan Rafterman  
Jane Rathje  
Lauren Remspecher  
Amanda Robben  
Steve Salstrom  
Nancy & David Sauerhoff  
Mary Vee Schwaner  
Carla Scissors-Cohen  
& Marshall Cohen  
Joan & Clifford Segal  
Kay Sherman & Iver Bernstein

Molly Shook & Alex Greenwood  
Leah Staenberg  
April Tapen  
Sean Tobin  
Ronald Upleger  
Ellen Weber & Joe Thomas

Please inform us for any  
unintended spellings or omissions  
and accept our sincere apologies.



# CONNECTwithUS

110 N. Jefferson Ave., St. Louis, MO 63103 | 314.361.444 | [collegeboundstl.org](http://collegeboundstl.org)

Facebook: [collegeboundstl](https://www.facebook.com/collegeboundstl) | Twitter: [@collegeboundstl](https://twitter.com/collegeboundstl) | Instagram: [collegeboundstl](https://www.instagram.com/collegeboundstl)

